



# BLOCK PARTY

HIP MACDONALD HIGHLANDS HOME IS THE IDEAL  
BACKDROP FOR NEIGHBORHOOD FUN

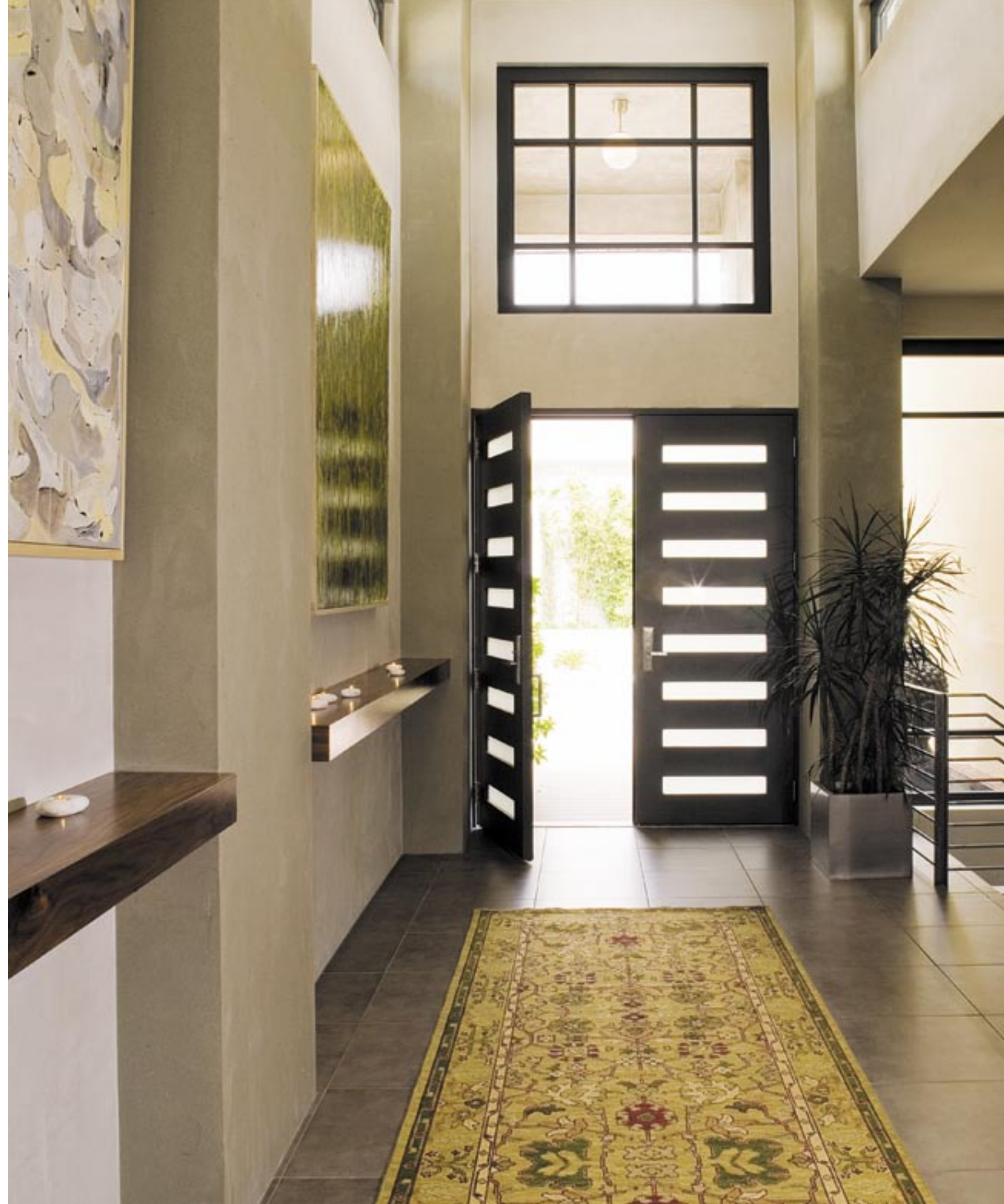
**Right:** Bold contemporary paintings by artist Bernard Dunaux greet guests at the Schloss' front entry. **Below:** The home's strong, perpendicular lines are stunning against the simple inviting desert landscape produced by Damon Lang (Green Planet Landscaping). "The client's personality and approach to life was my inspiration," says Sheldon Colen, the home's architect. **Opposite page:** Austrian-made Gaulhofer windows and doors offer a strong mid-century modern look against the hand troweled concrete walls, floors and ceilings.



**No matter the day or occasion, the home of Paul and Suzanne Schloss is primed for entertaining.** Thanks to the brilliant design efforts of Suzanne, the home she shares with her husband and two children is a welcoming beacon to family and friends.

"It seems as if I'm always planning food for a get-together or event," says Schloss. Even during this interview she is busily multitasking on several menus: a homemade fruit salad for a child's afternoon birthday party and cooking/preparing over six dozen hard-boiled eggs for an event at the MTV Music Awards. "Paul and I love to entertain, so I'm always thinking about new ways to bring people and food together."

Paul devotes most of his professional time to overseeing the operations of his eight Brooklyn Bagel stores in Las Vegas; Suzanne tends to household matters as well as serving at the helm of Bay Area Biscotti, a company she and Paul purchased in 2006. Her ability to juggle multiple projects with panache provides an insight into how she single-handedly conceived and oversaw the design, construction and decoration of their dream home.





Left: Serenity is the watchword for the Schloss master bathroom, done mostly in seagrass limestone and walnut accents. Right: Soothing soaking tub features Dornbracht bathroom fittings. Dunaux painting hangs on rear wall. "The tone of serenity continues when you walk through the front doors with clean lines and interesting finishes so that the structural design of the interior and exterior are in complete harmony," says Colen.



"I always wanted to build a house, but frankly neither Paul nor I had a clue what was involved," says Schloss. "When I broached the subject with architect/friend Howard Perlman (Perlman Architects), he smiled and gave us a copy of the Cary Grant/Myrna Loy film, *Mr. Blandings Builds His Dream Home* along with a bottle of wine and told us to watch it. The movie was the precursor to the Tom Hanks movie, *The Money Pit*, so even if you didn't see the movie, you know how it ended."

Schloss says the film definitely curbed her and Paul's enthusiasm for construction for about three years. She knew she wanted to stay in Green Valley—and MacDonald Highlands reminded her of her childhood neighborhood. In 2005, she came upon the perfect lot. "I called Paul immediately and told him we were buying it."

So how did Schloss get from there to building a new home? "Basically, I lifted ideas from decorating books and magazines," she notes. "I have always gravitated toward mid-century modern, so I wanted a look that was clean and angular. I found two



architects' projects that particularly spoke to me; I gave those to designer Sheldon Colen (SCA Designs) and said, "This is what we want." But Schloss didn't stop there. She continued to be the lead creative source on the project, staying up all hours of the night to scour the Internet for products and ideas to incorporate. Those ideas were meticulously cataloged and ultimately arranged on story boards, room by room, for Colen's consideration.

"We wanted a house around 5,000 square feet, but the original design came out at nearly 6,150. We compromised at 6,130," adds Schloss. From the curb, the home's strong, perpendicular lines—mostly metal and concrete—are a stunning contrast to the simple yet inviting desert landscape produced by designer Damon Lang (Green Planet Landscaping). "Damon had a brilliant idea to add a series of offset vertical concrete panels within the plantings. These really tie the grounds to the bold design of the home." Schloss also added a massive fountain statuary by the door—the head of a smiling Buddha that adds a calming touch for visitors. Subtle shades of blue, green and gray accent both the concrete and metal of the home, adding warmth, balance and a taste for what's inside.



Opposite page, left: Schloss bedrooms are as inviting as they are relaxing. A children's bedroom is kept minimalist yet fun. Opposite, right: Schloss solved achieving her aesthetic as well as the privacy issue with sliding doors throughout the home (including the bathroom seen here). This page: Pretty in Lavender. Schloss chose the palest purple hues to add calm and depth to a guestroom. Ebony-stained four-poster bed is from Room & Board; Capriz lamps from West Elm.



From the street, the house appears to sit at one level, just shy of 20 feet high. Sited on a foothill, it opens to reveal two stories. Inside, one is taken by the spaciousness and scale Schloss has achieved. With high dining room, living room and kitchen ceilings on contrasting planes, an open floor plan, and Gaulhofer windows and doors that provide a distinctively modern look, there's a grandness to the space.

Most interesting is Schloss' choice for most of the public interior: tinted, trowel-finished concrete with matching 18-inch tile on the floor. Even many of the counter and half-wall room divider surfaces are done in the virtually indestructible concrete medium. "I liked

the clean look that these materials provide, and the insulation value of the concrete is exceptional—our heating and cooling bills are half of what our neighbors pay. And concrete can withstand a lot of abuse—kids' fingerprints scrub right off." For the impeccable masonry work, Schloss contracted with Vegas artist Bob Davidson's company, Plastatech, whose handiwork includes the Statue of Liberty at the New York New York Hotel & Casino. "He was phenomenal and was constantly pushing the envelope with me."

Keeping true to the modern theme, Schloss kept her color palette and decorating spartan, but bold. For instance, she's hung five distinctive and large-scaled

**Opposite page:** Schloss found the sleek McGuire table and Maxalto 9613 chairs during a jaunt to Diva Furniture in LA; Nelson lamp is from [ylighting.com](#).

**Above:** The kitchen is as efficient as it is stylish; center island is used for prep, cooking and serving. Miele appliances; Poliform table and chairs.



Opposite page, left: With near professional grade appliances and generous counter space, the Schloss kitchen is always set for full cooking mode. Opposite page, right: Schloss used concrete surfaces on many of her countertops, including a breakfast between the kitchen and living room. Below: Schloss is ready to receive guests. This page: For private dinners with her family, an intimate crowd of neighbors and friends or a child's birthday party, Schloss can seat them comfortably around a Poliform table and chairs.



paintings of contemporary artist Bernard Dunaux, which lend drama, texture and color. Most of her dramatic retro lighting is Italian, sourced from [yilighting.com](http://yilighting.com). Cabinetry is a mix of custom, high-end and mainstream finds.

"I selected Poggenpohl cabinets with a grilled teak veneer for the kitchen and contrasted them with custom walnut wall units, breakfronts and shelving in the dining and living rooms, as well as a built-in office unit in our master suite. However, I was able to source a clean, complementary Asian-linear product from Woodmode—I used this in our bathrooms and closets." Disappointed with available interior doors, Schloss came up with her own, Shoji-style, mounting rice paper between the surfaces of two glass-paneled doors.

Given Schloss' passion for food, the kitchen is a showplace. All the appliances are equipped to accommodate a crowd. A 12-foot center island provides much-needed work surfaces as well as room to lay out a tantalizing spread. Nearby is an eating area featuring a large rectangular table and chairs by Poliform and custom built-in seating. The area overlooks windows to a deck that extends to the back of the house and offers dramatic and sweeping views west to The Strip and beyond. The living room features a "wall of windows," capturing the views.

"I've lived in Vegas for over 12 years, and this is the first neighborhood I've lived in where I felt like part of the community. It's a real social environment—always a party or card game or dinner going on. Lots of fun stuff—it really feels like home." ■

