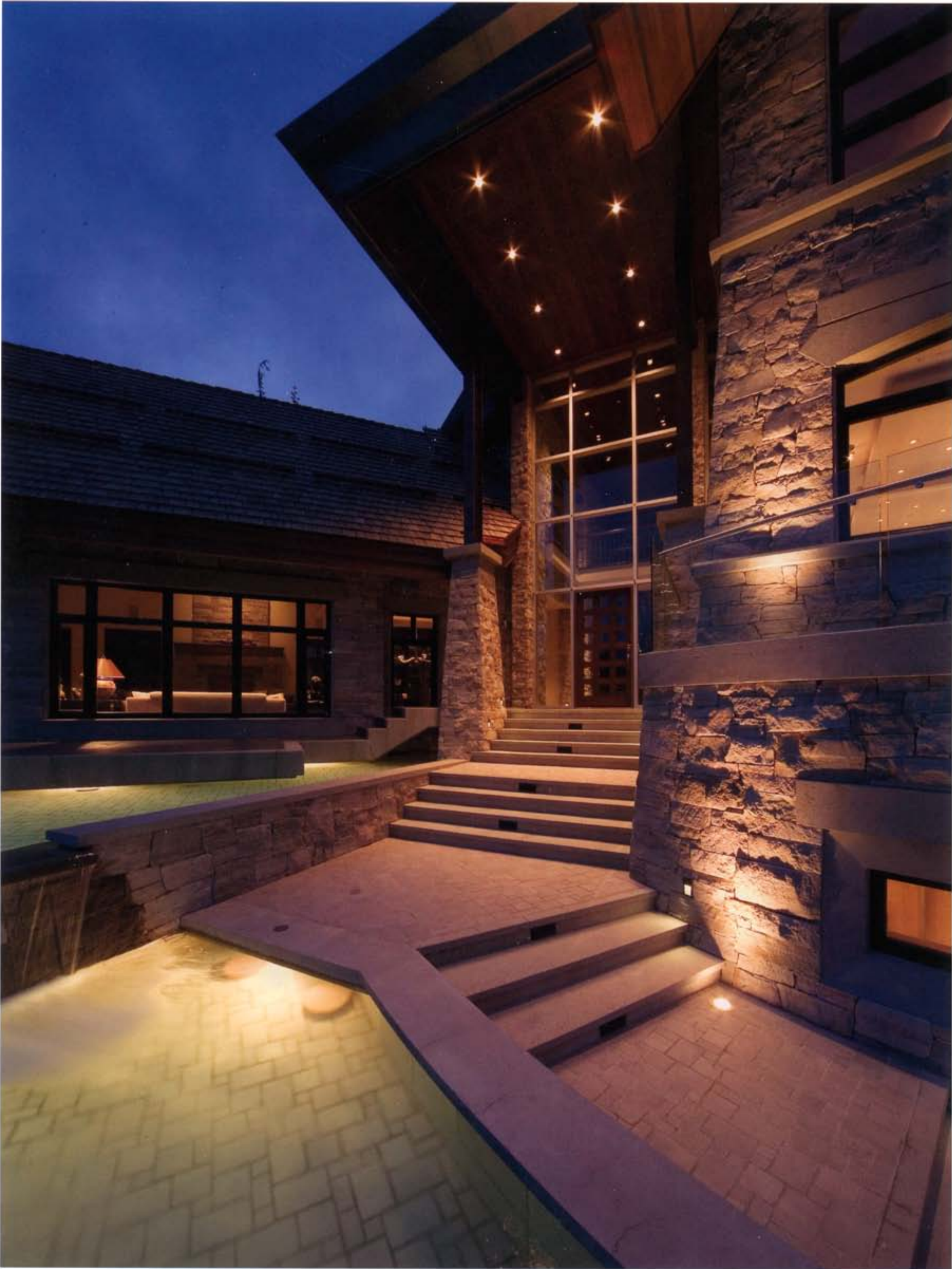


# The Couloir

Whistler, British Columbia, Canada



CHRISTIE'S  
GREAT ESTATES®







on the Olympic Downhill Run. A sunken multiperson spa and a relaxing waterfall with a heated two-tiered infinity pool add to the luxurious charm. A temperature-controlled wine cellar holds more than 2,000 bottles and includes 300-year-old gates leading to a tasting area. A three-car garage is enhanced by additional open parking for up to six vehicles. The home features a private, gated entrance, and the entire residence is wired for sound, high-speed Internet, and security.

**THE LOCATION:** Whistler lies in British Columbia's Spearhead Range, just inland from the Canadian west coast. Only 90 minutes from the international city of Vancouver, Whistler is readily accessible from anywhere in the world. Whistler's ski runs are matched by its summer attractions, which include three championship golf courses, hiking, tennis, and pristine lakes. Whistler Village offers numerous amenities, including shopping, fine dining, spas, and art galleries. Whistler is preparing to cohost the 2010 Olympic Winter Games.

Price upon request.

## Sea to Sky Premier Properties

Ann Chiasson  
135-4370 Lorimer Road  
Whistler, British Columbia V0N 1B4 • Canada  
(604) 905 6309 • FAX (604) 932 4120  
ann@myseatosky.com  
www.seatoskypremierproperties.com

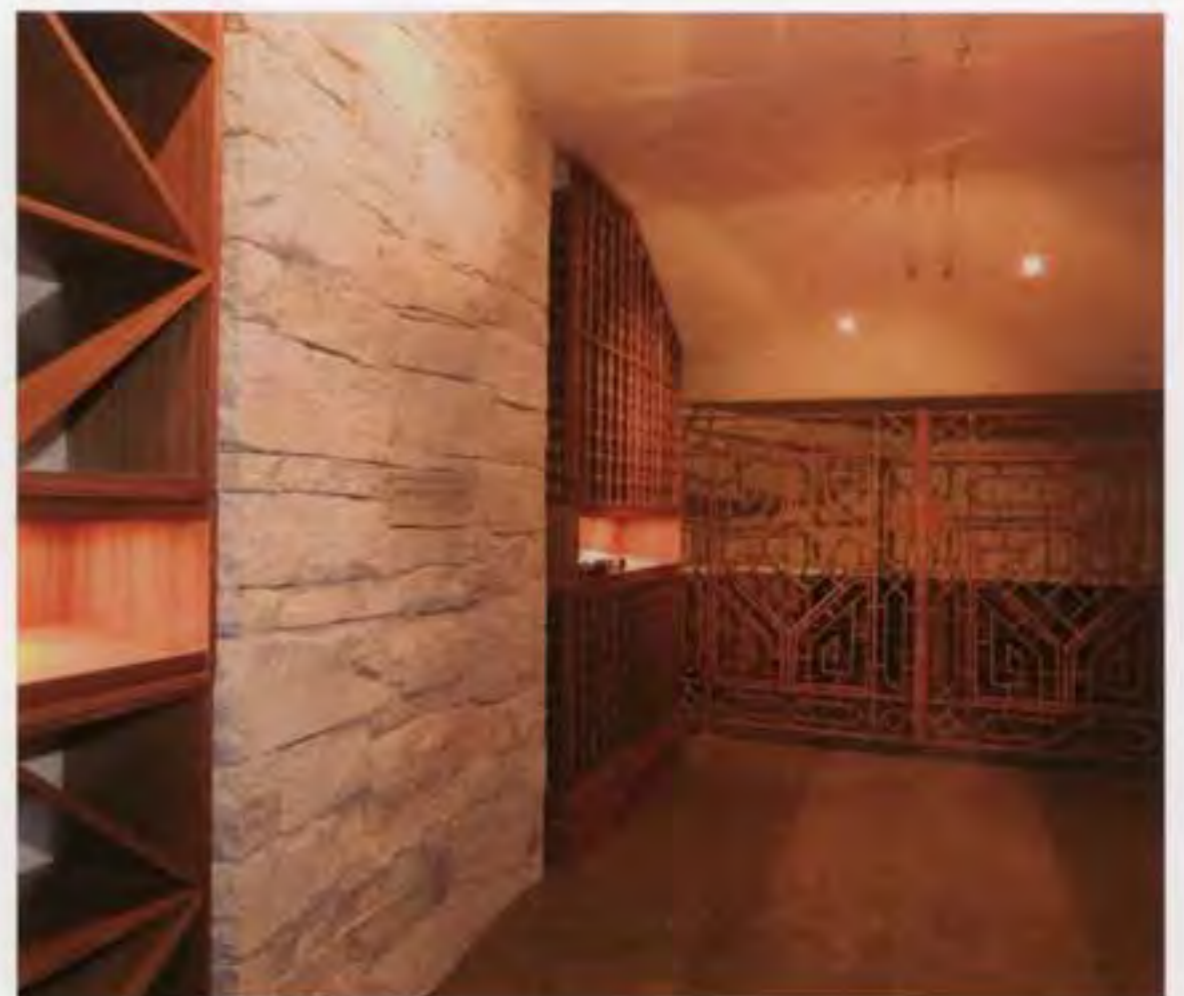
Exclusive Affiliate of Christie's Great Estates  
Information deemed reliable but not guaranteed.





plasma-screen television, and limestone walls and countertops. On the third floor, a lavish master bedroom pampers with Arbutus panelling, wall-to-wall carpeting, a dual-sided remote gas fireplace, a built-in plasma-screen television with a surround sound system, and a large walk-in closet. The master bath boasts dual sinks, a soaker tub, a steamshower, and rare custom Australian lace-wood cabinets complemented by German limestone countertops and tiles. Two additional guest bedrooms feature wall-to-wall carpeting and three-piece en suite baths with recycled glass tiles and European fixtures. This level of the home also features one of two laundry facilities.

**ADDITIONAL HIGHLIGHTS:** Italian bluestone tiles enhance the more than 1,000 square feet of heated outdoor deck space, which offers a perfect view of world-class skiers



# The Couloir

## Whistler, British Columbia, Canada

Known in skiing circles as an exhilarating challenge to be met by the best, the Couloir is an exceptional example of high-performance construction with a mystic ambience that thrills the senses. Residents will be able to watch skiers in the 2010 Winter Olympics from expansive decks while enjoying the calming effects of the home's infinity-edge pools. Featuring a spectacular ski-in, ski-out location on Whistler Mountain, this extraordinary home offers a dazzling array of technical details and luxurious finishes that set the standard for an active and sophisticated lifestyle. Concrete, steel, and timber-frame construction and an impeccable choice of quality materials define this five-bedroom, six and one-half bathroom residence, which rests on a one-acre lot. The property allows for a 5,000-square-foot guest house or a corporate center to complete the enclave. Private and peaceful, this exquisite residence also enjoys proximity to Whistler's amenities.

**THE LIVING SPACES:** The entrance way features walls made from Walnut Creek ledge stone, and the main door is made from Kentucky Oak, creating an impressive and stylish introduction to the home. The custom flooring throughout utilizes limestone from southern France and Kentucky quarter-sawn white oak. The great room boasts an open living area with vaulted ceilings, a grand floor-to-ceiling ledge-stone fireplace, and European plaster finish on the walls and ceilings. This space includes a formal dining room that is graced with a coffered ceiling showcasing a custom Venetian hand-blown glass chandelier, built-in cabinets, and a wet bar and wine refrigerator. This area of the home, which is furnished and includes certified antique Persian area rugs, provides an ideal spot for memorable and elegant entertaining. A den or library is located in the loft area overlooking the great room. The gourmet kitchen features custom-crafted cabinets, granite and flamed-granite countertops, a cozy coffee corner, a dumbwaiter, and stainless-steel appliances that include a Dacor gas range and dual convection ovens; two Fisher & Paykel dishwashers; dual Sub-Zero refrigerators, freezers, and ice makers; and a warming oven. A family room with a remote gas fireplace, built-in desk space and cabinets, and a 62-inch plasma-screen television invites intimate gatherings. The guest master suite features alder-wood and cherrywood panelling; a remote gas fireplace; a built-in flat-screen television; and a four-piece en suite bathroom with a Kallista soaker tub, a European toilet, a glass-enclosed shower, and slate tiles and countertops. A multipurpose room offers a custom built-in Murphy bed, a large glass-enclosed multiple-head shower, a

